



Society Sketchbook

Issue 51

October, 2023

INSIDE:

- * Classes info (page 2)
- * Workshop Booking (page 3)
- * Exhibition Review (page 4)

DATES FOR YOUR DIARY

ROGER DELLAR DEMONSTRATION:

People in Paintings in Oil
Thursday 28th September
7.30pm, Bishop's Sutton
Village Hall

ROGER DELLAR WORKSHOP:

People in Paintings in Oil
Saturday 14th October
10am - 4pm Christy Hall,
Old Alresford.
[Booking info page 3](#)

CATHERINE BEALE DEMONSTRATION:

**Reflections in Water
in watercolour**
Thursday 26th October
7.30pm, Bishop's Sutton
Village Hall

CATHERINE BEALE WORKSHOP:

**Reflections in Water
in watercolour**
Saturday 11th November
10am - 4pm
Christy Hall, Old Alresford.
[Booking info page 3](#)

MELISSA WISHART TALK: Exploring the Tradition of Oil Painting through artists' depiction of light

Thursday 30th November
7.30pm, Bishop's Sutton
Village Hall.
*Followed by mulled wine
and mince pies.*

EXHIBITION BREAKS RECORDS



The First Blossom, by first-time exhibitor Clifford D'Souza, scooped both the Best Watercolour prize and the Best Floral prize at the 2023 exhibition.

We were over the moon with the results of our 2023 exhibition, which notched up nearly 900 visitors, and record artwork sales of £3,500.

Sponsored for the sixth year by our good friends, Hellards estate agents, there were exhibits in watercolour, oil, acrylic, pastel, collage and mixed media, as well as sculpture and wire - truly something for everyone.

See page four for more on the winning entries including the People's Choice prize won again this year by Jeannie Pakenham, with her watercolour painting, *Owl on a Post*.

TACKLING PEOPLE IN PAINTINGS

The ever-popular Roger Dellar returns for our September meeting, where he will show us how to tackle people in paintings, in oil.

Roger writes: "My first inspiration was in the 1950s watching portrait painters at Butlins Holiday Camp doing quick portrait sketches of the people on holiday - I was hooked!

"Having left school at fifteen, I had to go to work and earn a living. I am, therefore, a self-taught, sort of University of Life artist, always changing, updating and each year feeling what's next?

"I joined the Wapping group in 1996 (he is now their President) and have always painted on-site since painting in my thirties.

"Although I am a member of three national societies (*The Royal Institute of Painters in Watercolour, The Royal Institute of Oil Painters, and the Pastel Society*) it has been in recent years that oils have become my main plein air medium, although I have used watercolour in the early years and also pastels and acrylics.

"Having been a keen observer of people in their environments, this is a constant source of inspiration for me," said Roger.

Please arrive in good time for this demo as we expect a big turnout. Car share if you can. Roger's workshop follows on the 14th October.



CLASSES ROUND UP

The classes for this Autumn term are now in full swing and are all fully subscribed, with 65 students enjoying the ongoing development of their painting skills.

THURSDAY MORNING WATERCOLOUR CLASS with Christopher Cole

THURSDAY AFTERNOON WATERCOLOUR CLASS for beginners/improvers with Sharon Hurst

FRIDAY MORNING WATERCOLOUR CLASS with Sharon Hurst

MONTHLY MONDAY AFTERNOON PORTRAIT CLASSES IN OILS with Juliet Bonham-Carter

For further information about these classes, or to express an interest for future terms, please contact Nikki Flannigan at nikkicartwright@btinternet.com

OIL CLASS (intermediate and advanced), painting together, occasional tutors. Full, waiting list available.

Please contact Penny Claisse for further information or to join the waiting list for this oil class at penny.claisse@btinternet.com.

ART ON THE LINE

Members from both Alton and Alresford Art Societies came together in July to support the Watercress Line's

Art on the Line event.



Covering shifts at every station from Alresford to Alton, visitors to the railway were able to watch artists at work each day.

Organisers were delighted with our involvement, and the week-end was a great success all round.

DEPICTIONS OF LIGHT

It is appropriate that following Catherine Beale's demo in October, specialising in capturing the light in watercolour, our November 30th talk by Melissa Wishart looks at how artists in the past depicted the light in their paintings in oil.

Melissa attended St Martins School of Art and Edinburgh College of Art part-time whilst studying for her honours degree at Edinburgh University. Her early career was as a documentary film-maker for TV. As her success grew, her time became more focused around oil painting.

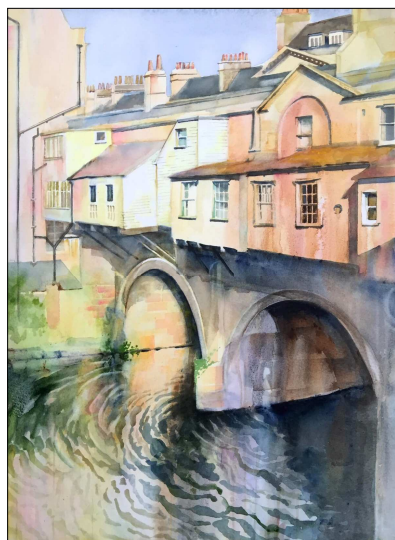
She loves light, water and life as matter. Seas, in all moods, skies, landscapes, light and the human body including portraiture. Some of Melissa's sources of inspiration are the works of Turner (below), Rembrandt, Seago, Singer-Sergeant, the Scottish Colourists, Rothko, Janette Kerr, David Copley, Ian McKeever and Gerhard Richter.

FINDING THE LIGHT

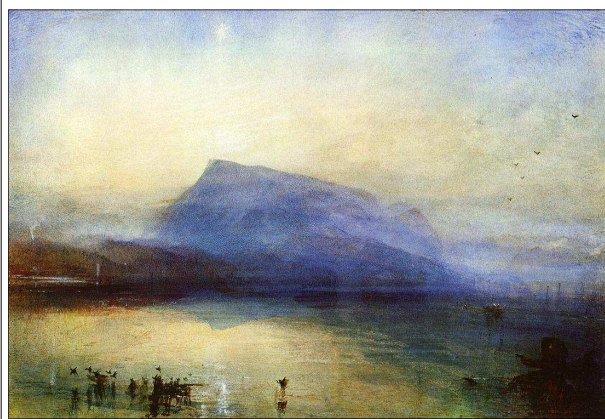
Catherine Beale is the demonstrator for our October 26th meeting, which she will follow with a workshop, on Saturday 11th November.

Her paintings explore all the facets of natural light within the British landscape and she finds watercolours perfect for capturing fleeting optical effects. From sunlight passing as rays through branches, to dappling through leaves, to glittering on the surface of streams.

Catherine uses juicy tubes of professional paint dropped into water. Colour pathways merge beautifully on rigid canvas which results in brilliant, light-fast paintings with a clean, contemporary finish.



Catherine says "I am a painter specialising in light-filled watercolours. I have grown to love the excitement of wet-in-wet and I now devote my artistic practice to this mobile medium."



PAINTING DAYS

Our first painting day of the summer was held at an idyllic location - Pelham Place in Newton Valence.



With some of the most beautiful views, this pretty, Gothic villa (left) dates from 1820, and is set high in a formal garden, adjacent to woodland, with a collection of modern British sculpture. Our painting day here raised a wonderful £130 for the Charlie Waller Trust.

Next was High Meadow

House in Selborne which had stunning views stretching from the Devil's Punch Bowl to Petworth and the South Downs (below) plus donkeys, a wild flower meadow, a fountain pond and formal gardens. Here we raised £190 for Allegra's Ambition, which supports disadvantaged young people through sport.



As we go to press members are packing their picnics for a day at Hinton Farm in Hinton Ampner.

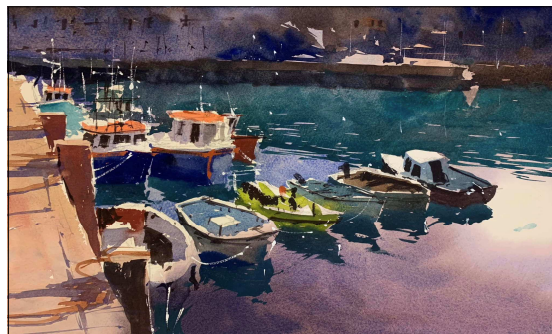
We are so grateful to our hosts who kindly open their gardens to us and to Sue Cox who every year manages to inveigle us into private oases where we can while away a day of painting and good company. Sadly our day at Coles in Privett (sketched by Ken Crowhurst) was cut short due to the weather, but our wonderful hosts have insisted that we come back next year.



DAZZLING SEASCAPE

Artist Tim Wilmot dazzled with his gorgeous seascape in watercolour at our June meeting.

First he made a pencil sketch from his original photo, then he painted different colour washes. He showed us the difference between synthetic and natural mop brushes while he finished his painting, alternating between the two. A super demo showing great skill.



BOOK YOUR WORKSHOP TODAY

STEP ONE

Contact Anne Lain to check availability on the workshop by email anne.lain627@gmail.com or telephone/text 07785 715 985.

STEP TWO

If there are still places available pay £40 by BACS to Lloyds Bank, Sort Code, 30-64-72, Account No. 31331268 with the artist's name as reference. Please send the details of any BACS payments to Anne Lain as above.

If paying by cheque please send a separate cheque for £40 for each workshop **and put the workshop name on the back of each cheque** to Anne Lain, 1 Bramble Hill, Alresford SO24 9JY.

Bookings are taken on a first-come first-served basis and your place is not guaranteed until a cheque or a BACS payment has been received.

WORKSHOP PROGRAMME

ROGER DELLAR

People in Paintings in oil
14th October (Saturday)
10-4, Old Alresford, Christy Hall

CATHERINE BEALE

Reflections in Water in watercolour
11th November (Saturday)
10-4, Old Alresford, Christy Hall

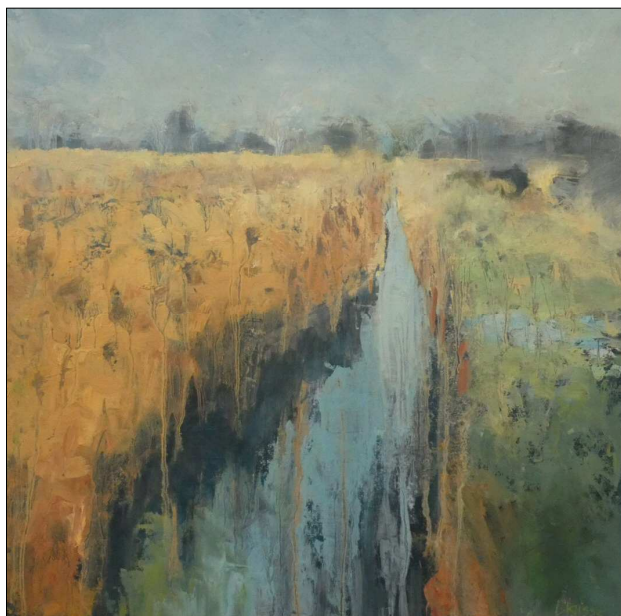
Any queries email anne.lain627@gmail.com or telephone/text 07785 715 985.

EXHIBITION continued

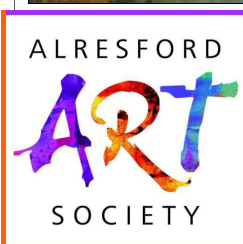
The exhibition was opened by contemporary artist Paul Treasure who said he was blown away by the quality and diversity of the paintings. After travelling the world, Paul now lives in Ropley and specialises in painting our famous chalk streams in oil. "Paint what you love and what inspires you," he said, "and you can't go wrong."



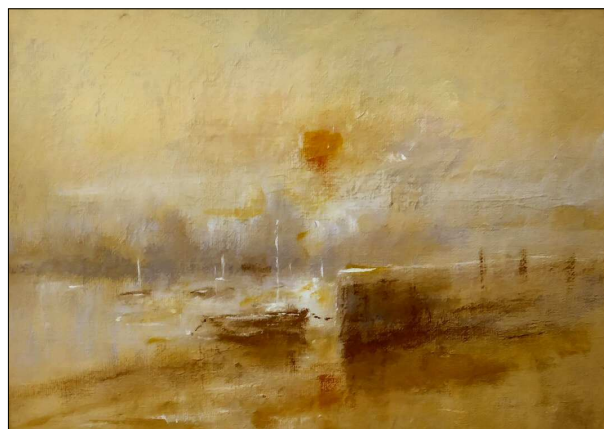
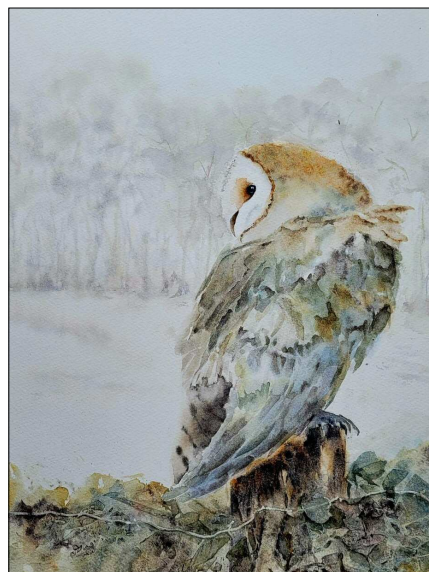
Exhibition winners were: Best Watercolour and Best Floral prizes - *The First Blossom* by Clifford D'Souza (see front page), Best Oil - *The River at Alresford* by Penny Claisse, Best Acrylic - *Dell Quay* by Richard Cox, Best Mixed Media - *Fly Away* by Emma Barker (above), Best 3D - *Fox* by Jen Boardman with The Best New Exhibitor - *Woodpecker* by Fiona Scott Morton.



Best Oil winner - The River at Alresford by Penny Claisse



Hundreds of visitors took part in the People's Choice competition, voting for their favourite exhibit, with Jeannie Pakenham scooping the prize for the second year running with her water-colour painting *Owl on a Post*.



Best Acrylic - Dell Quay by Richard Cox

A WARM WELCOME TO NEW MEMBERS

We are delighted to have welcomed twenty two new members over the last six months, many of whom have joined our classes and also exhibited for the first time. Please welcome:

Deborah Clark, Elizabeth Laird, Kathleen Pearce, Lizzie Holmes, Hilary Dean-Hughes, Geraldine Haig-Haddow, Judy Mortara, Stephen Shuttleworth, Clifford D'Souza, Emma Barker, Ruth Howdle, Robina Williamson, Traian Vaidean, Steven Mason, John Marriott, Charly Savory, Vanessa Hanley, Peter Tillen, Jonathan Mardall, Karen Fox, Nicola Johnson and Kaye Garret.

We do hope you enjoy being a member of our thriving art society.

email: artsociety@alresford.org

www.artsociety.alresford.org

This newsletter is edited by Sue Gentry, 01962 773185, sue.gentry@gentrypublicity.co.uk